



GAT MONTHLY MEMBERSHIP PROGRESS REPORT

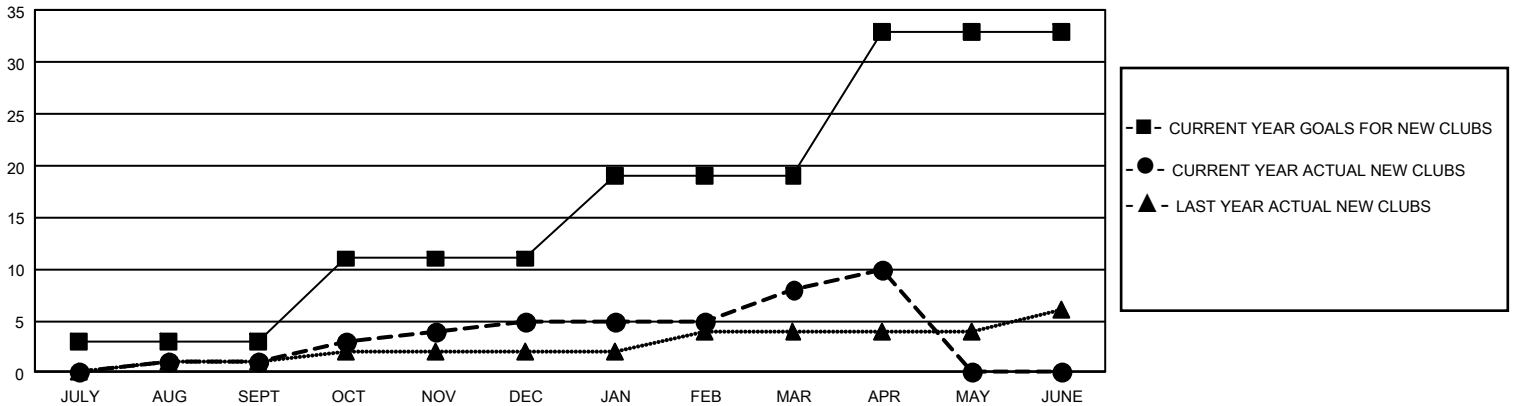
Results as of: 4/30/2021

GMT Constitutional Area 1, Group I

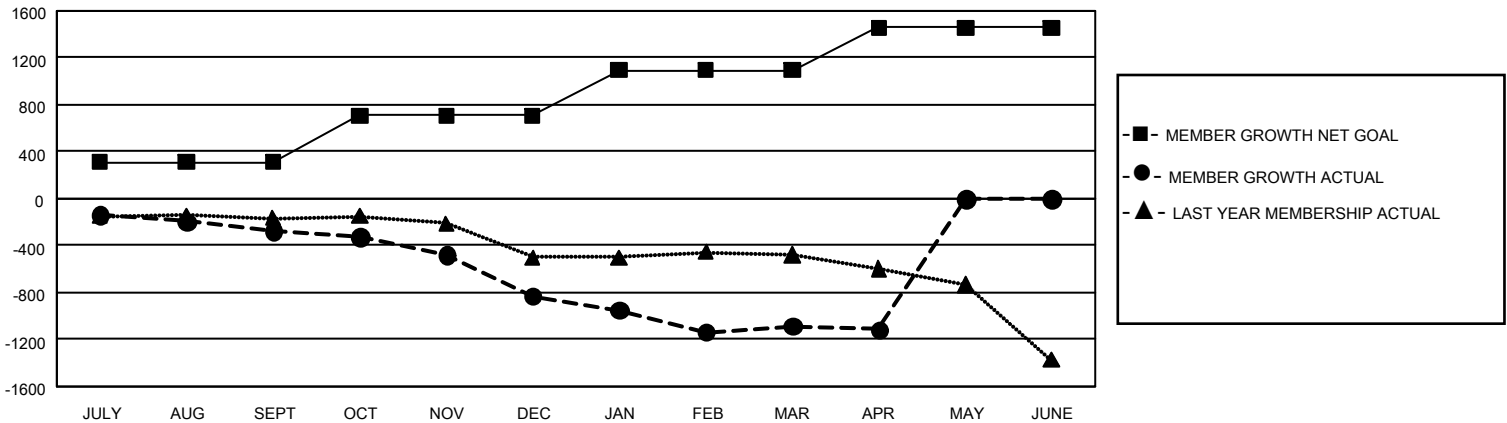
REPORT DOES NOT INCLUDE CLUBS IN UNDISTRICTED AREAS.

| Clubs | | | | Members | | | |
|-----------------------|---------------|-----------|---------------|-----------------------|------------------------|----------------------|--|
| RESULTS FOR 2020-2021 | | | | RESULTS FOR 2020-2021 | | | |
| QUARTER | NEW CLUB GOAL | NEW CLUBS | DROPPED CLUBS | QUARTER | MEMBER GROWTH NET GOAL | MEMBER GROWTH ACTUAL | DROPPED MEMBERS ACTUAL (including transfers) |
| JULY/AUG/SEPT | 9 | 1 | 7 | JULY/AUG/SEPT | 311 | 420 | 637 |
| OCT/NOV/DEC | 24 | 4 | 8 | OCT/NOV/DEC | 398 | 602 | 1,076 |
| JAN/FEB/MAR | 24 | 3 | 14 | JAN/FEB/MAR | 388 | 512 | 698 |
| APR/MAY/JUNE | 42 | 2 | 1 | APR/MAY/JUNE | 362 | 182 | 197 |

GOALS AND ACTUAL NEW CLUBS CUMULATIVE



GOALS AND ACTUAL MEMBERS CUMULATIVE



| | | | |
|---|--|---|---------------------------------|
| DROPPED CLUBS: 30 | 442 CLUBS OF 1,132 ADDED 1 OR MORE NEW MEMBERS | GENDER DISTRIBUTION | |
| | | MALE 19,858 (69.02%) | FEMALE 8,913 (30.98%) |
| DROPPED MEMBERS | | CLICK HERE FOR CUMULATIVE MEMBERSHIP DATA | TOTAL FAMILY UNIT MEMBERS 6,128 |
| DECEASED 524 CLUB CANCELLED 216 OTHER 1,868 TOTAL 2,608 | FAMILY MEMBERS PAYING HALF DUES 3,133 | | |